
Norton Utilities 4.0.3

Symantec has released patchers to versions of NUM 4.x into 4.0.3. The latest version offers numerous bug and feature fixes. Many of these seem to have first appeared in a version 4.0.2 which was never released or even mentioned on the company web site. The bootable CD now uses Mac OS 8.5.1. Disk Doctor, UnErase, FileSaver, Wipe Info, and Disk Light have all been improved. There is a patcher that can handle all versions of 4.x (12 MB) and smaller patchers specific to 4.0.1 and 4.0.2 (about 5 MB each).

http://www.symantec.com/techsupp/files/num/norton_utilities_version_4x_for_macintosh.html

Micromat TechTool 1.1.8

Micromat's free TechTool now supports Mac OS 8.5.1. TechTool can test your System files for integrity, reset the Parameter RAM, rebuild your desktop file from scratch and it can clean your floppy drive (with an approved substance). TechTool can be downloaded at:

<http://www.micromat.com/micromat/downloads.html>

Adaptec Toast 3.5.6

Adaptec has updated Toast, its CD burning software to version 3.5.6. The new version offers support for several new CD drives. (Version 3.5.5 added the capability to create Boot CDs).

<http://www.adaptec.com/support/files/upgrades.html#Toast>

Stuffit Expander 5.1

Stuffit Expander, Aladdin's freeware decompression tool has been improved again. It is now up to five (5) times faster than the 5.0 version and also decompresses ZIP, GZIP and encrypted ZIP archives from the PC.

HTTP://WWW.ALADDINSYS.COM/EXPANDER/EXPANDER_MAC_LOGIN.HTML

SCSIProbe! 5.0

Apple has removed SCSI ports from its latest Macs but that doesn't mean people won't still have need of a good SCSI bus tool. Adaptec has licensed the venerable SCSIProbe! and arranged for it to be updated to version 5.0 to work with its range of PCI SCSI cards.

<ftp://ftp.adaptec.com/pub/BBS/PowerMac/scsiprobe50.hqx>

System 7.5.3 Now Free

Apple has made System 7.5.3 free. You can get it (and the 7.5.5 update) on the internet at:

<http://asu.info.apple.com/swupdates.nsf/artnum/n11258>

ATM Deluxe & Mac OS 8.5!

Although we can't say enough good things about Mac OS 8.5.1 there are weaknesses when using it with font management utilities. For one thing, Suitcase 3.0.2 seems to be incompatible. ATM Deluxe 4.0.3 is partially compatible. By piecing together various tech notes, trouble calls to Adobe and our own experience here are some tips to avoid problems when using these two pieces of software. (Don't forget to read the documentation that came with software).

Application Crashing

Because of new font smoothing calls in Mac OS 8.5 there are certain ATM Deluxe preference settings that can result in your application (QuarkXPress for instance) crashing when drawing a menu or page item. In the ATM Deluxe preference settings you must select to preserve either Line Spacing or Character Shapes. This is as before. However, now you must select other preferences in a particular sequence to avoid random crashing. The choices are best explained by screen snapshots (see page 2 of this issue).

Another possibility is that you have a damaged font installed. You can use ATM Deluxe's font Reporting and Verifying tools in the Tools menu to identify damaged fonts.

Poor Screen Display

Letters missing on screen seems to be a result of problems created when ATM Deluxe is asked to autoactivate fonts that have duplicates on your hard drive. The duplicates could be identical sets of screen and printer fonts in two different folders, TrueType and PostScript versions of the same font in the same folder, two different brands of the same font (Adobe and Image Club for example), screen fonts missing a printer font, etc. It can be difficult to find an errant screen font within the suitcase of another set of screen fonts. If you are getting warnings from ATM that it has found more than one of a certain font then you are probably experiencing this problem.

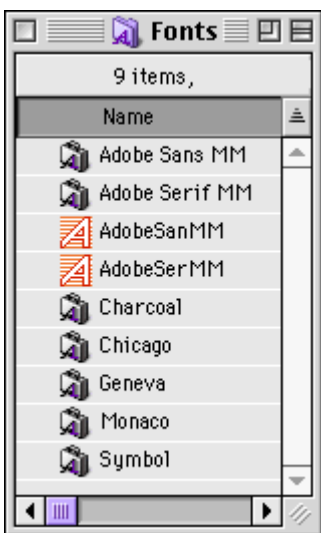
Poor Printouts

Letters missing on printout seem also to be a result of confusion when ATM is asked to autoactivate fonts that have duplicates on your hard drive or possibly when ATM is substituting fonts when you don't have the original available resulting in your screen display appearing correct but your printout suffering.

Our Advice?

- 1) Turn off Font Substitution in the ATM preferences. (If you are specifying specific fonts you certainly don't want them to be substituted!)
- 2) If you use a variety of customer supplied fonts on a regular basis turn off the Auto Activation feature (all fonts must be opened manually through ATM's add font feature).
- 3) Make sure you have one and only one set of screen and printer fonts for any given font family. Eliminate the TrueType font altogether if you already have a PostScript version.
- 4) Remove any unnecessary fonts installed into your System Folder Font Folder by Mac OS 8.5, Microsoft IE or Office etc. The only fonts you really need in the System folder for ATM and Mac OS 8.5 are: Adobe Sans MM; Adobe Serif MM; Charcoal; Chicago; Geneva; Monaco; Symbol. Open any others you need from outside the System Folder with ATM Deluxe manually.
- 5) When you have cleaned up your set of fonts you should delete your existing sets and all known fonts and re-establish your known fonts database by adding your fonts into Type Manager Deluxe all over again. When you have finished adding fonts let the program finish examining them. Double check for damaged fonts by selecting all known fonts and asking for Tools:Verify.

Precursor Systems is tracking this situation carefully and will let you know about any developments forthcoming from Apple and/or Adobe.



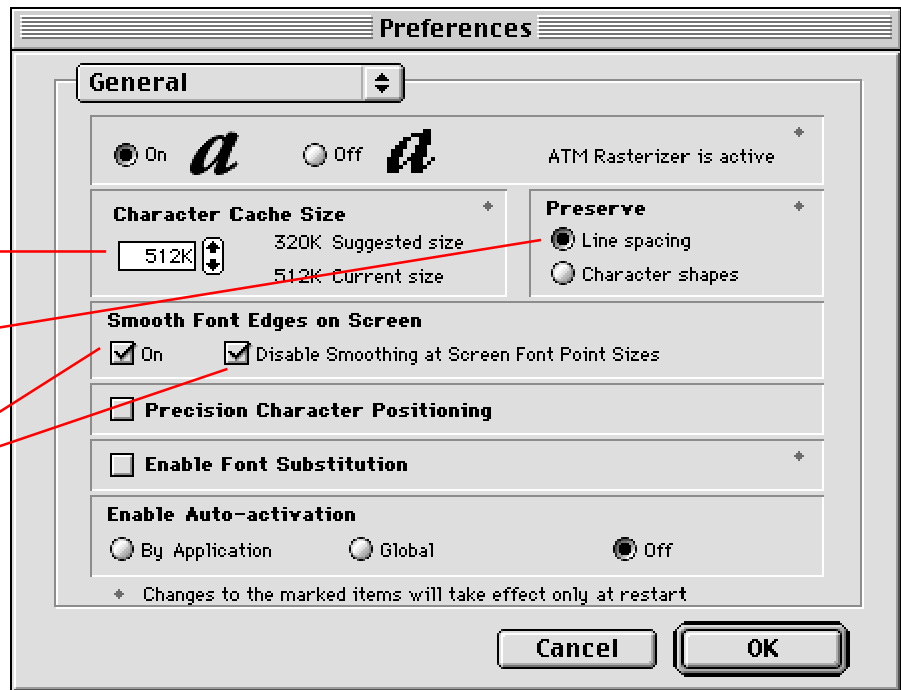
Open all other fonts through ATM Deluxe

Set your ATM Deluxe preferences! either ,this

Make sure to give ATM a decent sized font cache. We recommend 512K.

We recommend selecting "Preserve LineSpacing".

If so, you must enable both "Smooth Font Edges on Screen" and "Disable Smoothing at Screen Font Point Sizes".



or this

If you elect to favour character shapes (the bottom illustration) then you must turn off both of the Smoothing check boxes.

(In either case we recommend disabling the Font Substitution feature and -if you regularly use customer supplied fonts- the Auto-Activation feature as well).

